

# **IMC** INTERSTATE MANUFACTURING COMPANY INC.



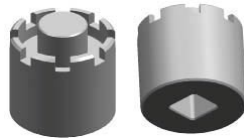
Interstate Manufacturing Company, Inc. provides Design, Fabrication and Industrial Supply solutions to government agencies and prime contractors for the purpose of fulfilling urgent as well as long term requirements and occupies a modern 10,000 square foot facility.

**CAGE CODE: 3CSK7**

IMC is registered with CCR, ORCA and the SBA and conducts business under the following NAICS codes:  
333514 332439 332710 332721 333511 333513 54142

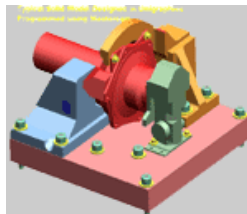
## DESIGN/DRAFTING SERVICES

- TOOL DESIGN – JIGS AND FIXTURES
- GAGING (MANUAL AND ELECTRONIC)
- MACHINING/GRINDING FIXTURES
- COMPOSITE TOOLING
- SERVICE TOOLS (ASSEMBLY - DISASSEMBLY)



## MACHINE DESIGN

- SMALL TO MEDIUM SIZED SPECIAL EQUIPMENT
- UTILIZING ELECTRIC, PNEUMATIC AND HYDRAULIC COMPONENTS.



## DRAFTING

- REDRAWING IN CAD AND UPDATING

## MACHINING SERVICES

- TOOL MAKING
- MASTERCAM PROGRAMMING
- CNC MILLING
- JIGBORING
- BLANCHARD GRINDING



## OUTSIDE SERVICES INCLUDE:

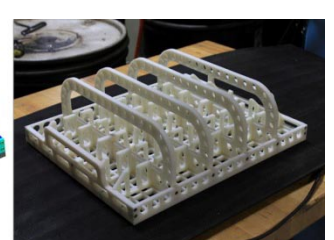
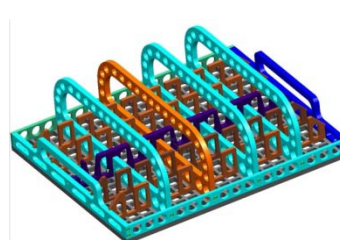
- HEAT TREATING
- PLATING, PAINTING
- WELDING
- INSPECTION

## CAPABILITIES:

- CNC MILLING: 66" x 50"
- CONVENTIONAL TURNING
- 48" DIAMETER



Our **Digital Manufacturing process**, also referred to as **3D Printing and Rapid Prototyping**, enables our customers to obtain a quickly produced physical part that they can bring to meetings or use to mock up an assembly of other parts without the time and expense of conventionally machining the part.



## CNC MACHINING CENTERS

### KINGSBURY VMC 600

X 66" Y 50" Z 24" 3 AXIS 4,000 RPM  
50 TAPER RENISHAW PROBING

### MONARCH VMC 45B

X 30" Y 18" Z 20" 4 AXIS 10,000 RPM  
50 TAPER RENISHAW PROBING

## MILLING MACHINES

### (3) BRIDGEPORT 2HP SERIES I

DIGITAL READ OUT, POWER FEED

### (2) PROTOTRAC

## LATHES

### BULLARD 42" VTL

### TAKISAWA TC-2 CNC LATHE

10" DIA. X 36" LG

### HARDINGE CHUCKER

### ENGINE LATHE

14" DIA. X 40" 2.5" DIA. SPINDLE BORE

8" DIA. MAX OVER SADDLE

## HONE

### SUNNEN HONE

.060 THRU 1.250 MANDRELS

## JIG BORES

MOORE #3 JIG BORE - 24" Y 11"

## GRINDING

HARIG 6" X 18" BALL WAY, DIGITAL READOUT

6" X 18" PRECISION SURFACE GRINDER

12" X 24" PRECISION HYDRAULIC WET GRINDER

## INSPECTION EQUIPMENT

SURFACE PLATES

MICROMETER SETS GAGE PIN SETS

GAGE BLOCK SETS

DIAL BORE SETS

MAGNETIC SINE PLATES

MAGNETIC COMPOUND SINE PLATES

CYLINDER SQUARE

PRECISION ANGLES & VICES

PRECISION ROTARY TABLE



## OUR CLIENTS

GENERAL DYNAMICS - ARMAMENT

GE AIRCRAFT ENGINES

GE POWER GENERATION

HAMILTON SUNDSTRAND

KAMAN AEROSPACE

PRATT & WHITNEY AIRCRAFT ENGINES

ARINC

... AND MORE



GE  
Aviation



ARINC DEDICATION BEYOND EXPECTATION



GE Healthcare



## MANUFACTURER OF MEDICAL PROTOTYPES

## Contact Us

Keith Stone

President

[keithstone@interstatecorps.com](mailto:keithstone@interstatecorps.com)

James Stone

Business Development

[jimstone@interstatecorps.com](mailto:jimstone@interstatecorps.com)

84 Gold St.

Agawam, MA. 01001

Phone (413)789-8674

Fax (413)789-8675